

CARING FOR CHILDREN AS A SUPPORT TO FAMILIES AND SOURCE OF INCOME:



Professional Family Child Care Alliance of Georgia (PFCCAG) and 9to5 National Organization for Working Women Georgia

EXPLORING CHILD CARE AS A SOURCE OF INCOME POST COVID-19

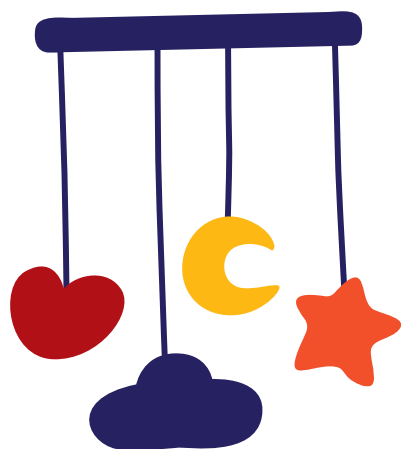
FAMILY FRIEND AND NEIGHBOR (FFN) CARE:

WHEN DO YOU NOT NEED A LICENSE?

- when you are caring for **UP TO 2** children for a fee
- when you care for children and **DO NOT** charge a fee
- when you care for up to 2 children for a fee and *other* children for free (*such as grandchildren*)



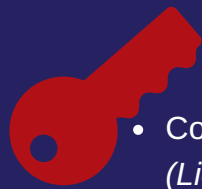
FAMILY CHILD CARE LEARNING HOME (FCCLH): WHEN YOU DO NEED A LICENSE?



- if you care for between **3 and 6** children for pay, you must obtain a license through the **Department of Early Care and Learning (DECAL)**
- in addition to the 6 children for pay, you can serve children of relatives not for pay, and 2 children age 3 years and older, for 2 designated one hour periods

Children of relatives include sons, daughters, grandchildren, nieces, nephews, and first cousins

KEY REQUIREMENTS:



- Complete **DECAL Preservice Licensing and Other Required Classes** (*Licensing Orientation Meeting, CPR & First Aide, and training in other topics*)
- Submit proof to **DECAL** your home complies with local government (*city or county*) requirements for zoning, business permit, fire department, and water supply
- Submit proof to **DECAL** that, if applicable, your landlord or homeowner association, agrees for you to have a **FCCLH** home
- Complete, or request a variance to complete (*within 24 months of opening*), a credential or degree in early child care and learning
- Complete comprehensive background checks on yourself and anyone living in your home
- Certify you meet a set of “*Core Rules*” prior to opening



For a complete explanation of FCCLH licensing requirements go to:

bit.ly/decalFCCLH

CHILD CARE LEARNING CENTER

- In Georgia, if you care for 7 or more children for pay, you must obtain a license through **DECAL** to be a **Child Care Learning Center (CCLC)**
- Individuals considering opening a **FCCLH** often explore the **CCLC** option as well
- Just as **FFN** caregivers may consider their work a stepping stone to becoming a **FCCLH** home, some **FCCLH** providers consider their home a stepping stone to owning a **CCLC**

For a complete explanation of **CCLC** licensing requirements go to:

bit.ly/decalCCLC



WORKING FOR YOU

PFCCAG is working with **9to5** and other professional and child advocacy organizations to support **FFN** caregivers and **FCCLH** applicants. To contact **PFCCAG**, send an e-mail to info@pfccag.org or visit the website www.pfccag.org.



To contact **9to5**, send an email to info@9to5.org or visit www.9to5.org.

